

PROJECT MAP

FINS/Babine Forest Products
Fish and Fish Habitat Inventory

Pierre/Twain

Mapsheet 093K061

Map 3 of 4

SCALE 1 : 20,000



Projection: ALBERS EQUAL AREA

PRINTED: May 03, 2001

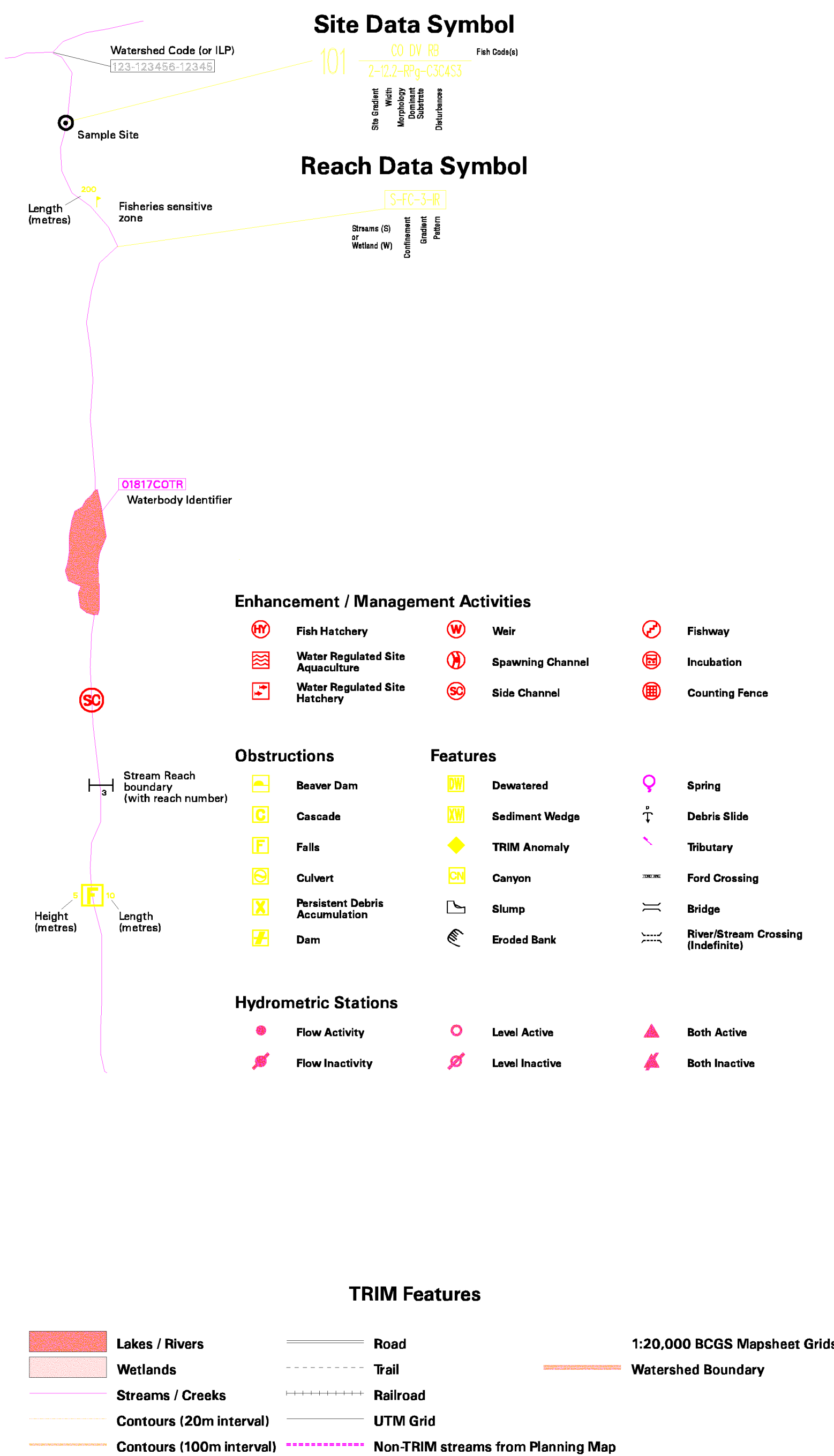
AML - y:\active\fins\aml\fins-ffhproj99(suppl).aml
Supplement AML - y:\active\fins\aml\fins-ffhproj99(suppl).aml

PREPARED BY:

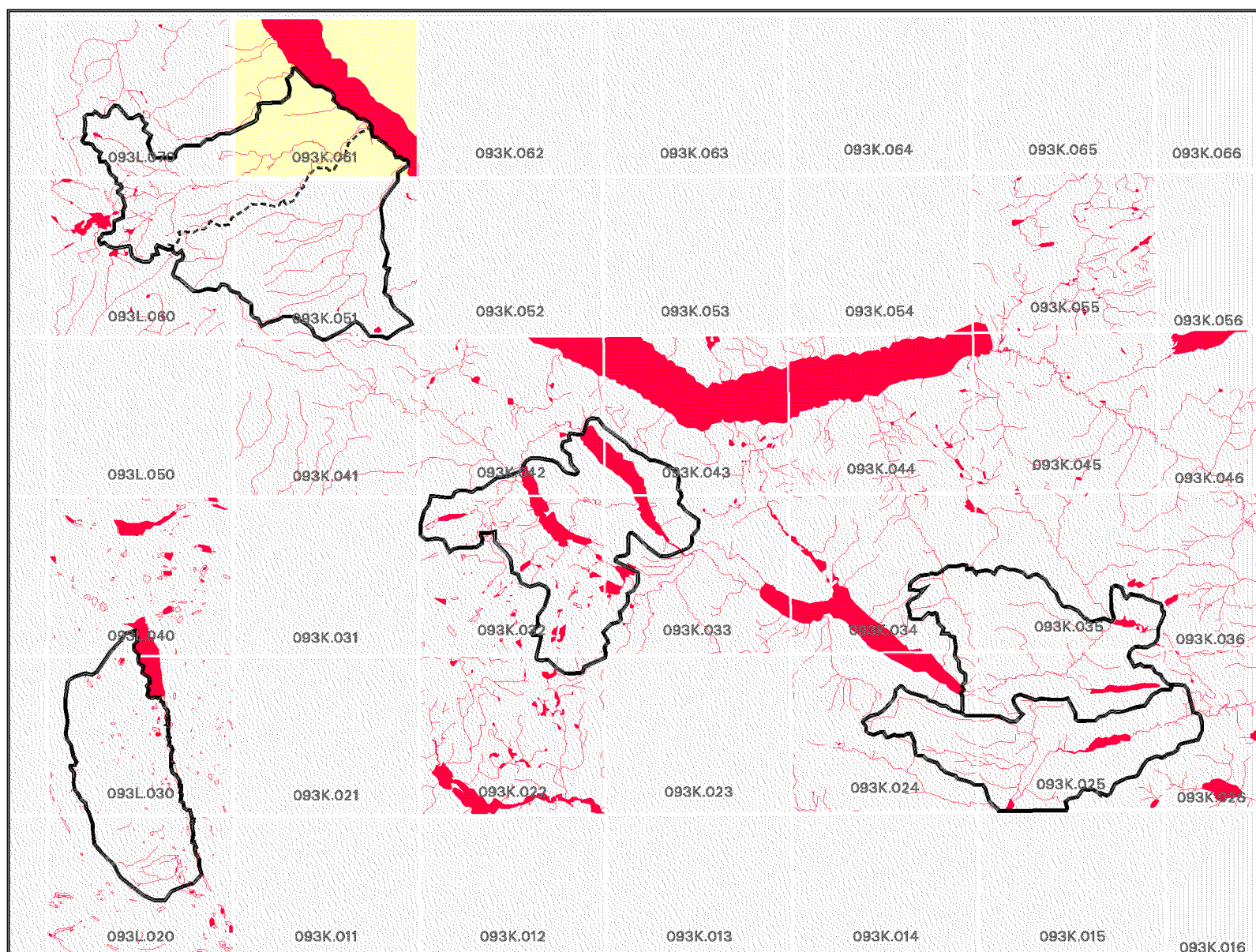
FINS
FISH INVENTORY SPECIALISTS

AMD
Digital Imaging

Stream Information Summary



Project Area(s)



Source Information

BASE: TR
LOC: FDG
HAB: INV
FISH: INV
DATE INV: July/10 - September 29, 1999
STR SYM: INV
LK SYM: INV
INV MGMT: MELP

MAPPING STANDARDS: B.C. Ministry of Fisheries - "Standards for Fish and Fish Habitat Maps"
VERSION: 2.0
DATE: May 1998 (Errata #2 May 2000)

MAP ACCURACY IS PLUS OR MINUS 20 METRES

Fish Species Codes

DV/ST	Dolly Varden/Bull Trout	KO	Kokanee	WCT	Westslope Cutthroat Trout	EN	Entrenched
CT	Cutthroat Trout	LKC	Lake Chub	SU	General Sucker	CO	Confined
RB	Rainbow Trout	BB	Burbot	NS	Not Sampled	FC	Frequently Confined
TSS	Threespine Stickleback	CAS	Prickly Sculpin	NCD	Not Classified Drainage	OC	Occasionally Confined
CAL	Coastrange Sculpin	C	General Minnows	NVC	No Visible Channel	UN	Unconfined
PK	Pink Salmon	SK	Sockeye Salmon	NFC	No Fish Caught	N/A	Not Applicable
SP	Spike	CSU	Largescale Sucker				
CCG	Stimy Sculpin	CO	Coho Salmon				
WF	White Fish General	CC	General Sculpin	(I)	Presumed fish presence		

Stream Confinement Codes

Stream Pattern Codes

Stream Morphology Codes

Substrate Codes

Disturbance Indicator Codes

ST	Straight	RP	Riffle Pool	F	Fines <2mm	01	Beaver Dams	D1	Small woody debris
SI	Sinuuous	CP	Cascade Pool	G	Gravels 2-64mm	B1	Abandoned Channels	D2	Large woody debris
IR	Irregular, wandering	SP	Step Pool	C	Cobbles 64-256mm	B2	Eroding Banks	D3	Recently formed LWD jams
IM	Irregular, meandering	LC	Large Channel	B	Boulders >256mm	B3	Avulsions	D4	Homogeneous bed texture
ME	Regular meander			R	Rock >4000mm	C1	Extensive Riffles or Cascades	S2	Sediment fingers
TM	Tortuous meanders					C2	Minimal Pool Area	S3	Sediment wedges
						C3	Elevated Mid-channel Bar	S4	Extensive bars
						C4	Multiple Channels or Bars	S5	Extensively scoured zones
						C5	Disturbed Stone Lines		

This product has been accepted as being in accordance with approved standards within the limits of Ministry quality assurance procedures. Users are cautioned that interpreted information on this product developed for the purposes of the Forest Practices Code Act and Regulations, for example stream classifications, is subject to review by a statutory decision maker for the purpose of determining whether or not to approve an operational plan.